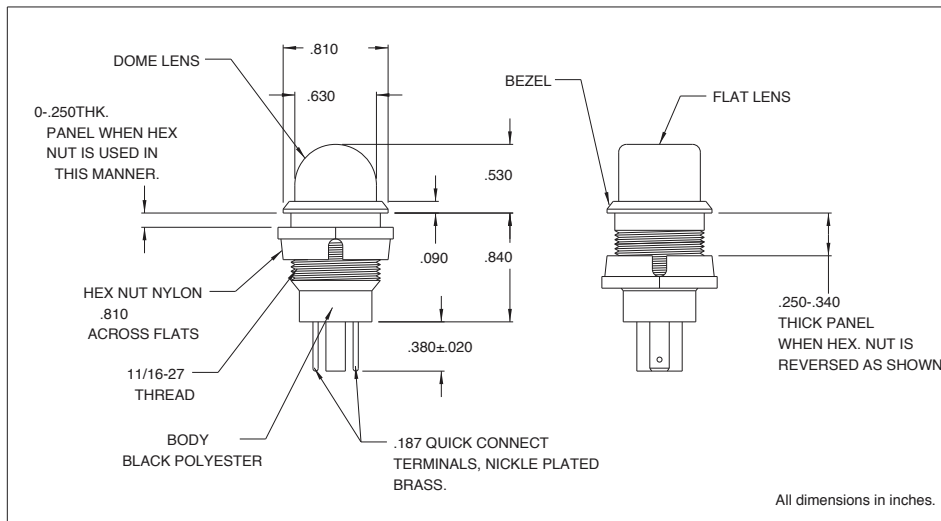
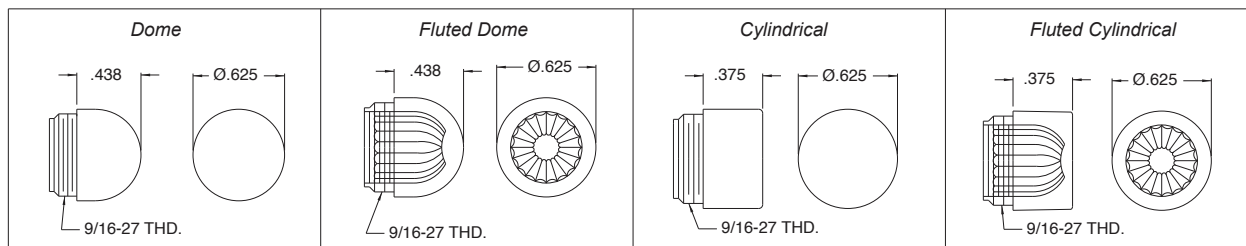


2802 Series Relampable Incandescent Indicator Light

Description and Features



Lens Specifications



All dimensions in inches.

Ordering Information:

For use with T-2 Slide Base (standard) lamps.
Complete assembly consists of socket (2802),
lamp, and lens (see chart below).
Items supplied unassembled.
Lamp, lens and socket must be ordered
separately.

Mounting: Supplied with polyester hex nut.

Lens: Polycarbonate-threaded

Body: Black polyester

Terminals: Nickel plated brass

Bezel: Black

| Lens Part No: | Description |
|--|--------------------------------|
| 25P-306* | Transparent dome |
| 25P-307** | Translucent dome |
| 25P-326* | Transparent fluted dome |
| 25P-606* | Transparent cylindrical |
| 25P-607** | Translucent cylindrical |
| 25P-626* | Transparent fluted cylindrical |
| (*) R=Red, A=Amber, G=Green, C=Clear | |
| (**) R=Red, Y=Yellow, G=Green, W=White | |

Note: For 120 volt applications, CML recommends the use of
a slide base neon lamp, rather than an incandescent lamp.

Mouser Electronics

Authorized Distributor

Click to View Pricing, Inventory, Delivery & Lifecycle Information:

VCC:

[25P-607G/S](#) [25P-607Y](#) [25P-607G](#) [25P-326BS](#) [25P-326B](#)